

MecA Gene Prevalence in *Staphylococcus aureus* Isolates from Dairy Cows in Turkey

**Esra Buyukcangaz^{1*}, Serpil Kahya¹, Aysin Sen¹, K. Seyrek Intas², Aysegul Eyigor³, Seran Temelli³
and K. Tayfun Carli¹**

¹Uludag University, Department of Veterinary Microbiology, 16059, Gorukle, Bursa, TURKEY

²Uludag University, Department of Veterinary Gynecology and Obstetrics, 16059, Gorukle, Bursa, TURKEY

³Uludag University, Department of Food Hygiene and Technology, 16059, Gorukle, Bursa, TURKEY

Received: 05.12.2013; Accepted: 09.01.2014; Published Online: 11.02.2014

ABSTRACT

This cross-sectional study was performed between October 2010 and July 2012 from six different municipalities in Turkey to determine the prevalence of *mecA* gene in *Staphylococcus aureus* isolates from milk samples of mastitic cattle by PCR. Milk samples (n:1600) from 50 different Holstein Friesian herds were evaluated by California Mastitis Test and 480 clinical mastitis cases were diagnosed and taken for further investigation. Out of 480 samples, 151 have been identified to harbor *Staphylococcus aureus* by API-*Staph*® (Biomereux) identification panel and the results have been evaluated by API-*web* system. Kirby Bauer Disc Diffusion Test was used for determination of Cephoxitin® (Oxoid) susceptibility. By PCR, 24 isolates (15.89 %) were found to carry *mecA* gene and yielded an amplification product of 154 bp. This report represents that a significant number of MRSA was found among *Staphylococcus aureus* isolates in mastitis cases.

Key Words: *Staphylococcus aureus*, cattle, mastitis, *mecA*, MRSA

Türkiye’de Sütçü Sığırlardan Elde Edilen *Staphylococcus aureus* İzolatlarında *mecA* Geninin Prevelansı

ÖZET

Bu kesitsel çalışma, Ekim 2010-Haziran 2012 tarihleri arasında Türkiye’de 6 farklı belediyeden, PCR yöntemi ile mastitisli sığır sütlerinden elde edilen *Staphylococcus aureus* izolatlarındaki *mecA* gen prevalansını belirlemek amacı ile yapılmıştır. Elli farklı Holstein Friesian sürüsünden elde edilen süt örnekleri (n:1600) California Mastitis Testi ile değerlendirildi ve 480 klinik ve subklinik mastitisli örnek saptanarak ileri incelemeye alındı. 480 adet süt örneğinin 151 adedi API-*Staph*® (Biomereux) tanımlama paneli ile *Staphylococcus aureus* olarak değerlendirildi ve sonuçlar API-*web* sistemi tarafından yorumlandı. Cephoxitin®(Oxoid) duyarlılığının tanımlanması için Kirby Bauer Disk Difüzyon Testi yapıldı. PCR ile 24 izolatın (%15.89) *mecA* geni taşıdığı ve 154 bp’lik amplifikasyon ürünü oluşturduğu saptandı. Bu rapor mastitis olgularındaki *Staphylococcus aureus* izolatlarında önemli oranda MRSA bulunduğunu göstermiştir.

Anahtar Kelimeler: *Staphylococcus aureus*, mastitis, *mecA*, MRSA, sığır

INTRODUCTION

Staphylococcus aureus (*S. aureus*) is the most epidemic nosocomial pathogen in humans (Barton *et al.* 2006, Biedenbach *et al.*, 2004) as well as the primary causative agent of mastitis in cattle (Quinn *et al.* 2000; Songer and Post 2005; Moon *et al.*, 2007; Vanderhaeghen *et al.*, 2010). *S. aureus* is considered as a significant pathogen with related virulence factors such as slime factor (biofilms), PVL (Panton Valentine Leucocidine) and some enzymes (proteases, lipases, and elastase), which enable it to destroy host tissues and metastase to other sites (Gordon and Lowry 2008).

Methicillin-resistant *S. aureus* (MRSA) includes *S. aureus* that have acquired a gene, called *mecA*, giving them resistance to methicillin and essentially to all other beta-lactam antibiotics. MRSA was first reported as a nosocomial pathogen in 1961, soon after methicillin was introduced into human medicine to treat penicillin-resistant staphylococci (Anonymus, 2011). Recently MRSA clones have particularly been detected in animal populations (Feßler *et al.* 2010, Lee, 2003). Although MRSA is mostly associated with the acquiring *mecA* gene, the role of inappropriate antibiotics use should also not be underestimated in formation of bacterial resistance

* Corresponding author: kocakaya@uludag.edu.tr

and multidrug resistant strains (Chambers, 1997). MRSA infection from mastitis cases is partly related with failure in dosage therapy and choice of antimicrobial substance (Juhász-Kaszanyitzky *et al.*, 2007, Feßler *et al.*, 2010).

Although MRSA has sporadically been isolated from animals since 1972 (Devriese *et al.*, 1972) emergence of animals has recently been more evident in animal populations of livestock dairy herds, swine farms, kennels, and in animals brought to veterinary hospitals (Seguin *et al.*, 1999; Van Duijkeren *et al.*, 2004; Farzana *et al.*, 2004, Voss *et al.*, 2005; Moon *et al.*, 2007, Juhász-Kaszanyitzky *et al.*, 2007, Buyukcangaz *et al.*, 2013). There are many other MRSA cases detected in companion animals (Walther *et al.*, 2008, Van der Eede *et al.*, 2009) and raw chicken, turkey, pork, beef, veal, lamb meats (Lee, 2003, Van Loo *et al.*, 2007, De Boer *et al.*, 2009).

Methods used for bacterial population analysis were presented by some reports (Cuny *et al.* 2010, Enright *et al.*, 2000). Such as a European-wide study of MRSA blood culture isolates concluded that MRSA CC398 accounted for less than 1% of all MRSA cases from humans (Grundmann *et al.*, 2010, Köck *et al.*, 2011). New variants of spa-type t011 of MRSA are reported as a serious problem in dairy farms, which require urgent attention (Spohr *et al.*, 2011).

There are over 30 species of staphylococci including *S. aureus*, which are the most pathogenic for both humans and animals, and can be differentiated from other Staphylococcal species (e.g. *S. pseudointermedius*, *S. hyicus*, *S. warnerii*, *S. saprophyticus*, *S. chromogenes*) by a positive coagulase reaction in the diagnostic laboratory (Quinn *et al.* 2000, Songer and Post, 2005). Commercial identification panels such as Vitec, Sensititre, BACTEC, API-*Staph* identification systems have been used to identify *Staphylococcus* to sub-species in both human and animal isolates for many years (Brown *et al.* 2005). *MecA* detection by PCR is accepted as the gold standard method for identifying MRSA (Anonymous, 2011). There are also some FDA-approved commercial Polymerase Chain Reaction (PCR) assays for MRSA detection, namely, BD GeneOhm MRSA ACP (BD Diagnostics) ®, BD GeneOhmStaphSR (BD Diagnostics) ®, Xpert MRSA (Cepheid) ®, Xpert MRSA/SA SSTI (Cepheid) ®, Xpert MRSA/SA BC (Cepheid) ® and LightCycler MRSA (Roche) ® (Marlowe and Bankowski, 2011). Most FDA-approved PCR methods are essentially equivalent in performance, with sensitivities ranging from 82 to 100% and specificities ranging from 64 to 99% (Harbartha *et al.*, 2011).

The purpose of this study was to investigate the presence of *mecA* gene in *S. aureus* isolates from mastitis cases in Holstein Freisian dairy cows.

MATERIALS AND METHODS

Sample processing

This study was performed between October 2010 and July 2012. Milk samples (n: 480) were taken from Holstein Fresian cattle (n: 1600) from 50 different herds in six different municipalities and their provinces of Turkey; i.e. Bursa (Nilufer, Karacabey, Yenisehir, Buyukorhan, Orhaneli), Edirne, Luleburgaz, Canakkale, Afyonkarahisar and Balikesir with a capacity of ≥ 100 cattle. All the cities had high dairy cow densities, and are located in the northwest region of Turkey except Afyonkarahisar. In all farms, regular monitoring procedures for mastitis were implemented for lactating cows twice a day; such as pre and post milking teat disinfection, using an iodine teat dip (0.75 % active iodine), counting somatic cells from all lactating quarters by California Mastitis Test (CMT). CMT was scored between I-IV based on the characteristics of the thickening observed, III and IV (300.000 cells/ml of milk) was determined as subclinical mastitis. CMT positive samples were taken under sterile conditions for further bacteriological analysis.

Culture

An enrichment procedure was implemented according to De Boer *et al.* (2009) without second step enrichment procedure for the detection of *S. aureus*. For this purpose, sterile sample tubes containing milk were centrifuged at 3000 rpm ($664 \times g$) for 5 min, and a sterile, ultrafine, cotton-tipped swab was dipped and rotated into the precipitate. Swabs were then placed into a Mueller Hinton Broth (Oxoid® CM0405) containing 6.5 % NaCl

(Merck-K37303004 -721) individually and incubated aerobically at 37°C for 24 h. A loopful of this culture was then streaked onto Baired Parker Agar (Oxoid® CM 961) containing 5 % Egg Yolk Tellurite Emulsion (Oxoid®-SR0054C) and incubated for 48 h in aerobic conditions. One grey-black coloured *Staphylococcus* spp. suspect colony was streaked onto Colombia Agar (Biomérieux®-1001499590) to obtain pure isolate for use in identification. API-Staph® (Biomérieux, Lyon, France) commercial identification panel was used for classifying candidate *Staphylococcus* isolates according to the manufacturer's guideline. The results were evaluated by API-Web® system. Kirby Bauer Disk diffusion test for Cephoxitin (Oxoid®-CT0 119B) was applied to all *S. aureus* isolates and the results were evaluated according to directives of Eucast 2012 (Anonymous, 2012).

In this study, commercially available (Microbiologics®) *S. aureus* ATCC 25923 and MRSA ATCC 33591, ATCC 43300 and ATCC 700699 were used in all steps as reference strains.

PCR

A PCR method described by DelVecchio *et al.* (1995) with some modifications was implemented to detect *mecA* gene from the MRSA isolates. Primer pairs, MRS1 (5'-TAGAAATGACTGAACGTCCTG-3') and MRS2 (5'-TTGCGATCAATGTTACCGTAG-3') were used to amplify a 154 bp product. Pure *S. aureus* subcultures on TSA (Tryptic Soya Agar) were diluted in 50 µL DNase/RNase-free deionized sterile water (Lonza®, Accugene-BE51200). A commercial DNA isolation kit (GenJet Genomic DNA purification kit K0722, Fermentas, Thermo Scientific®) was used for the extraction of DNA according to the manufacturer's instructions. Amplifications were carried out with 25 µL reaction volumes consisting of 2 µL of the sample DNA, 0,2 mM concentration of each of four deoxynucleoside triphosphates (dATP, dCTP, dGTP, and dTTP), 0,2 mM each of the primers MRS1 and MRS2, 0,5 U of *Taq* polymerase and 0,625 mM MgCl₂ (Fast-Start *taq* DNA polymerase, dNTP pack 04738381001, Roche-Diagnostics®, Indianapolis, USA). Samples were amplified with an initial denaturation at 94°C for 5 min, followed by 35 cycles with each cycle consisting of 40 s of denaturation at 94°C, 40 s of annealing at 55°C, and 50 s of extension at 72°C in a gradient thermal cycler (Techné TC-3000TX-G®, Bibby Scientific, UK). Ten microliters of the PCR amplicon was loaded into a 2 % (wt/vol) agarose gel (SeaKem – Lonza®) in 1X TAE buffer using EzVision One loading dye (Amresco), and run concurrently. 100 bp DNA Ladder SM0241, 50 µg Thermo Scientific® and the PCR product obtained from the positive control ATCC 43300 were included in each run. Bands were visualized in an UV-Tech Fire Reader (Progen Scientific®, Merton, London, SW19 3UU).

RESULTS

A total of 151 (31.45%) *S. aureus* isolates were identified by API-Staph® detection kit out of 480 subclinical mastitis cases. Sixtytwo (41.05%) isolates were determined as resistant to Cephoxitin (30 µg) according to EUCAST Clinical Breakpoint Table Version 2.0, 2012 (Anonymous, 2012). Twenty four of the 151 isolates were found to harbor *mecA* gene. Figure 1 show distinct PCR product bands corresponding to respective molecular size stained with Ez-Vision Dye in agarose gel. The locations of mastitic dairy cow isolates, where *mecA* was detected from are shown in Table 1. Figure 2 demonstrates the distribution of *mecA* carrying *S. aureus* isolates and their locations in Turkey.

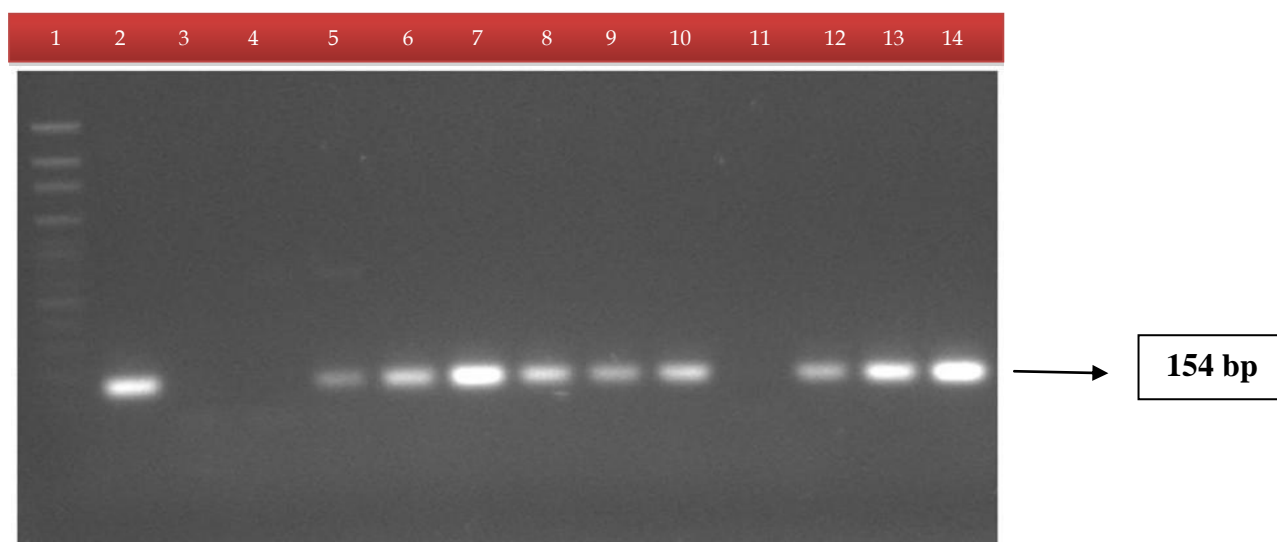


Figure 1: PCR results in agarose gel of reference *S.aureus* strains and some isolates in this study. 1) 1-100 bp Marker, 2) 2- *S.aureus* ATCC 33591, 3) 3-*S.aureus* ATCC 25922, 4) 4- *E.coli* ATCC 25922, 5) 5-10 *mecA* positive *S. aureus* isolate, 6) 11- *mecA* negative *S. aureus* isolate, 7) 12-14 *mecA* positive *S. aureus* isolate

Table 1. Distribution of *mecA* positive *Staphylococcus aureus* isolates based on geographical regions

Number	Isolate Number	Cephoxitin Susceptibility	<i>mec A</i> gene carriage	Region
1	B10	R	+	Bandirma-Balikesir
2	73	R	+	Karacabey-Bursa
3	77	R	+	Karacabey-Bursa
4	91-A	R	+	Karacabey-Bursa
5	91-B	R	+	Karacabey-Bursa
6	118	R	+	Afyon
7	126	I	+	Karacabey-Bursa
8	149	S	+	Canakkale
9	165-B	S	+	Canakkale
10	168	S	+	Canakkale
11	185	S	+	Yenisehir-Bursa
12	187	S	+	Yenisehir-Bursa
13	199	R	+	Yenisehir-Bursa
14	207	S	+	Yenisehir-Bursa
15	209	I	+	Yenisehir-Bursa
16	215	R	+	Yenisehir-Bursa
17	216	R	+	Yenisehir-Bursa
18	217	I	+	Mustafakemalpaşa-Bursa
19	218	S	+	Mustafakemalpaşa-Bursa
20	368	S	+	Afyon
21	372	R	+	Afyon
22	466-G	R	+	Karacabey-Bursa
23	466-S	R	+	Karacabey-Bursa
24	480-K	R	+	Karacabey-Bursa

S: Susceptible, I: Intermediate, R: Resistant

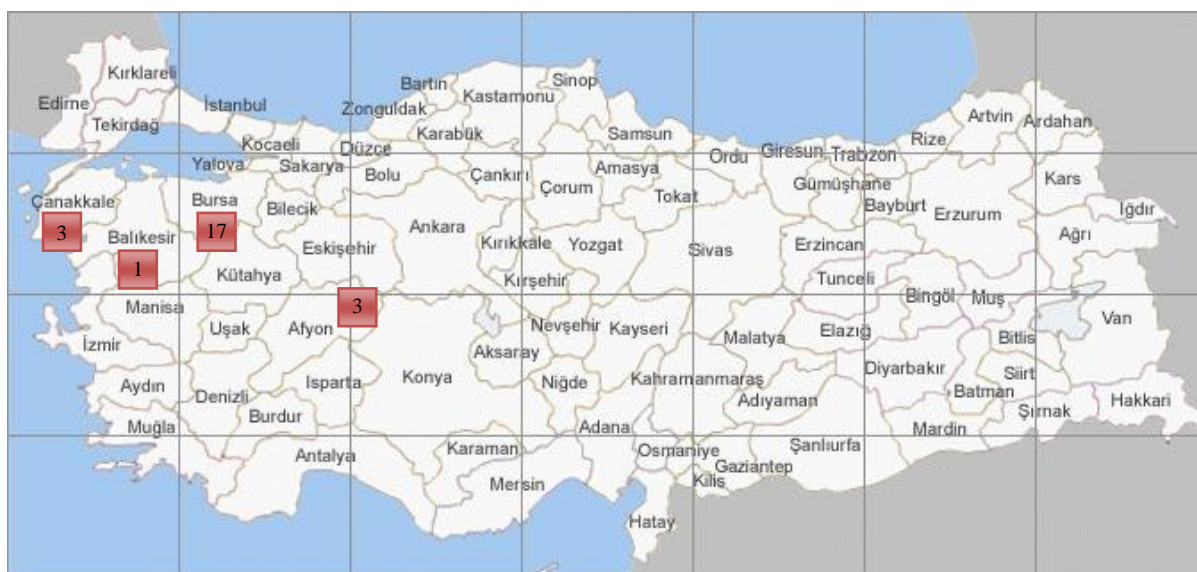


Figure 2. Map of *mecA* distribution of *Staphylococcus aureus* isolates derived from dairy cattle, Northwestern Turkey.

DISCUSSION

Mastitis due to *S.aureus* infection in cattle is a problem worldwide. Recently, MRSA clones (*mecA* positive) from mastitis cases in dairy cows have been detected from different countries (Lee, 2003; Farzana *et al*, 2004; Moon, J.S. *et al.*, 2007; Juhasz-Kaszanyitzky *et al.*, 2007). A study from Serbia (Zutic *et al*, 2012) indicated that 5 (5.9%) MRSA were found in 84 (39.6%) *S.aureus* isolates from 212 (20.7%) cows with subclinical mastitis. In another study (Vanderhaeghen *et al.*, 2010), 11 (9.3 %) out of 118 *S.aureus* isolates were found to harbor *mecA* gene in isolates from Belgian cows. Spohr *et al.*(2011) detected 5.1–16.7 % MRSA in milk samples of dairy cows in the first level of investigation of three different farms, and the respective proportions in the second herd level investigation were 1.4–10.0 %.The presence of MRSA in cattle has recently been reported in Turkey (Turkyilmaz *et al*, 2010) and in our work. Also, Ucan and Aslan (2002) from Konya region determined MRSA prevalence as 1.33 % in milk samples from mastitic cattle while Kirecci and Colak (2002) reported that MRSA prevalence was 8.7% in milk samples from mastitic cattle. In another report by Kaynarca and Turkyilmaz (2010) a total of 16 (10.6 %) MRSA was isolated, while Turkyilmaz *et al.* (2010) reported to detect %17.2 MRSA from mastitic milk samples. Contrary to these, Tel *et al.* (2012) could not detect MRSA in bovine originated *S.aureus* strains in south eastern region of Turkey. None of the studies performed in Turkey mentioned above did not cover the northwestern region of Turkey and we could not compare our results that we found percentage of MRSA as 15.89, with them. Vast differences in MRSA prevalence rates reported in these studies could be primarily related to differences in regions, isolation and identification procedures including PCR and possibility in horizontal gene transmission between *Staphylococcus* species.The high percentage of *mecA* gene carriage in our isolates, on the other hand, may be due to horizontal transmission (Chambers, 1997) of this gene between the strains found together in one sample or environment that we observed that most of the milk samples had more than one *Staphylococcus* species including Coagulase Negative *Staphylococcus* spp. (CoNs) and Coagulase Positive *Staphylococcus* spp. (CoPs).

Heterogeneous and borderline resistance can be developed in some clinical isolates according to the culture conditions and β -lactam antibiotic use. Lee *et al.* (2003) claimed that some susceptibility tests such as Minimal Inhibitory Concentration (MIC), Kirby Bauer Disc Diffusion and Agar Dilution can over estimate methicillin resistance in such a way that the isolates that do not carry *mecA*, can be identified as resistant to methicillin phenotypically. In this study 62 isolates were found to be resistant to cephoxitin by disc diffusion test, but essentially some of them were not carry *mecA* gene. Among the MRSA isolates, cephoxitin susceptibility

were detected as 13 (54.16 %), 3 (12.5 %) and 8 (33.33 %) of Resistant (R), Intermediate (I) and Susceptible (S), respectively.

In this study, single step enrichment procedure was carried out with Mueller Hinton broth containing 6.5 % NaCl (De Boer *et al.*, 2009) without antimicrobial addition followed by plating step in Baired Parker with Egg Yolk Potassium Tellurite implemented for the detection of *S.aureus*. As far as we know, this single step enrichment method for the detection of *S.aureus* from milk samples was applied for the first time in our study. Some researchers (Brown *et al.*, 2005, Sautter *et al.* 1998) suggested that enrichment of screening swabs is more sensitive than direct plating. Marlowe and Bankowski (2011) reported that broth enrichment prior to plating showed further increase in sensitivity of the selective culture. In this study *S.aureus* and MRSA isolation percentage (31.45 % and 5%, respectively) might be related with enrichment procedure implemented.

Several chemicals and antimicrobials such as mannitol salt, oxacillin, and cephalosporins were often combined (De Boer *et al.*, 2009; Wertheim *et al.*, 2001) for differentiating MRSA from Methicillin Susceptible *Staphylococcus aureus* (MSSA). In recent years cephalosporins have been reported to be particularly successful when they are used as an alternative to oxacillin. A phenyl red mannitol broth containing aztreonam and ceftizoxime (Wertheim *et al.*, 2001) allowed the growth of all reference MRSA strains tested. In our study, no antimicrobial substance was used during the isolation procedure. Second step enrichment with adding antimicrobials and chemicals might increase and/or decrease the isolation rates of *S.aureus* and MRSA. Previous studies indicate that there is a need for further optimization prior to standardization for MRSA-screening culture methods (Brown *et al.*, 2005).

Molecular methods have high sensitivity and rapid turnaround time when comparing other phenotyping methods. PCR assays may also improve clinical outcomes by decreasing the time to identification of coagulase-negative *Staphylococcus* species (CoNS), MSSA, and MRSA and by allowing for earlier, more effective antimicrobial therapy. It was approved that PCR should be considered the 'Gold Standard' for methicillin resistance (Suzuki *et al.*, 1992; Tokue *et al.*, 1992; Chambers, 1997, Anonymous, 2011). Because of this, in this study, the *mecA* prevalence was detected by a PCR method described by De Vecchio (1995) with some modifications.

European Food Safety Authority (EFSA) (Anonymous, 2009) recommends that further work should be performed on harmonising methods for sampling, detection and quantification of MRSA during carriage in both humans and animals. Epidemiological findings related with MRSA screening studies in animals are very limited worldwide and especially in Turkey. This study represented a considerably high MRSA prevalence in dairy cattle in Turkey. The information concerning the prevalence of MRSA strains were obtained by PCR-based methods proved to be useful tools to monitor the circulation of these strains in these animal husbandry settings. Additional studies needed for control of MRSA prevalence and detection of antimicrobial resistance in MSSA, MRSA and CoNs in lactating cows and animal populations in Turkey. A detailed surveillance should be implemented by the Ministry of Agriculture of Turkey to monitor the MRSA together with other multiple antibiotic-resistant bacteria especially of major zoonotic importance such as *Salmonella* and *Campylobacter jejuni*.

ACKNOWLEDGEMENT

This study was supported by the project entitled 'Sağlıklı ve Klinik Mastitisli Sığırların Süt Örneklerinden Elde Edilen *Staphylococcus aureus* İzolatlarında Methicillin Direnç Geni Varlığının Araştırılması' with Project. No UAP (V) 2009/12 from Uludağ University Scientific Research Projects Unit.

REFERENCES

Anonymous (2009): Assessment of the Public Health significance of methicillin resistant *Staphylococcus aureus* (MRSA) in animals and foods. Scientific Opinion of the Panel on Biological Hazards (Question No EFSA-Q-2008-300). The EFSA Journal, 993, 1-73. <http://www.efsa.europa.eu/en/efsajournal/doc/993.pdf> (Accessed at 03.06.2013)

- Anonymous (2011): OIE & Iowa State University. The Center for Food Security and Public Health & Institute for International Cooperation in Animal Biologics. *Methicillin Resistant Staphylococcus aureus (MRSA)*, <http://www.cfsph.iastate.edu/Factsheets/pdfs/mrsa.pdf> (Accessed at 03.06.2013)
- Anonymous (2012): EUCAST, European Committee on Antimicrobial Susceptibility Testing Breakpoint tables for interpretation of MICs and zone diameters Version 2.0. *EUCAST Clinical Breakpoint Table v. 1.0 2009/ 12-22* http://www.eucast.org/fileadmin/src/media/PDFs/EUCAST_files/Disk_test_documents/EUCAST_breakpoints_v1.0_20091221.pdf (Accessed at 03.06.2013).
- Barton M, Hawkes M, Moore D (2006): *Guidelines for the prevention and management of community associated methicillin resistant Staphylococcus aureus: prespective for Canadian health are practitioners*, Can J Infect Dis Med Microbiol, 17, 4-24.
- Biedenbach DJ, Moet GJ, Jones RN (2004): *Occurrence and antimicrobial resistance pattern comparisons among bloodstream infection isolates from the SENTRY Antimicrobial Surveillance Program (1997-2002)*. Diagn. Microbiol. Infect. Dis, 50, 59-69.
- Brown DFJ., Edwards DL., Hawkey PM., Morrison D, Ridgway GL., Towner K J, Wren MWD (2005): *Guidelines for the laboratory diagnosis and susceptibility testing of methicillin-resistant Staphylococcus aureus (MRSA)*. J Antimicrob Chemother, 56, 1000–1018.
- Buyukcangaz E., Velasco V., Sherwood J.S, Stepan R.M., Koslofsky R.J., Logue C.M (2013) *Molecular Typing of Staphylococcus aureus and Methicillin-Resistant S. aureus (MRSA) Isolated from Animals and Retail Meat in North Dakota, United States.*, Foodborne Path. Dis.10(7): 608-617. doi:10.1089/fpd.2012.1427.
- Chambers HF (1997): *Methicillin resistance in staphylococci: molecular and biochemical basis and clinical implications*. Clin. Microbiol. Rev, 10, 781-791.
- Cuny C, Friedrich A , Kozytska S, Layer F, Nubel U, Ohlsen K, Strommenger B, Walther B, Wieler L, Witte W (2010): *Emergence of methicillin-resistant Staphylococcus aureus (MRSA) in different animal species*. Int J Med Microbiol, 300, 109–117.
- De Boer E., Zwartkruis-Nahuis JT, Wit B, Huijsdens XW, de Neeling AJ. de, Bosch T, Van Oosteromb RAA, Vila A, Heuvelink AE (2009): *Prevalence of methicillin-resistant Staphylococcus aureus in meat*. Int J Food Microbiol, 134, 52–56.
- Del Vecchio VG, Petroziello J M, Gress M J, McCleskey F K, Melcher G P, Crouch H K, Lupski J R (1995): *Molecular Genotyping of Methicillin-Resistant Staphylococcus aureus via Fluorophore-Enhanced Repetitive-Sequence PCR*. J Clin Microbiol, 33, 2141–2144.
- Devriese L, Van DLR, Famaree L(1972):*Methicillin (cloxacillin)- resistant Staphylococcus aureus strains isolated from bovine mastitis cases*. Zentralbl Veterinarmed B, 19, 598-605.
- Enright MC, Day NP, Davies CE, Peacock SJ, Spratt BG (2000): *Multilocus sequence typing for characterization of methicillin-resistant and methicillin- susceptible clones of Staphylococcus aureus*. J Clin Microbiol, 38,1008–1015.
- Farzana K, Shah S, Jabeen F(2004):*Antibiotic resistance pattern against various isolates of Staphylococcus aureus from row milk samples*. J Res Sci, 15, 145-151.
- Feßler A, Scott C, Kadlec K, Ehrlich R, Monecke S, Schwarz S(2010): *Characterization of methicillin-resistant Staphylococcus aureus ST398 from cases of bovine mastitis*. J Antimicrob. Chemother,65, 619–625.
- Gordon RJ, Lowry FD (2008): *Pathogenesis of Methicillin Resistant Staphylococcus aureus Infection*, Clin Infect Dis, 46, 350-359.
- Grundmann H, Anensen DM, Van D Wijngaard CC, Spratt BG, Harmsen D, Friedrich AW (2010): *Geographic distribution of Staphylococcus aureus causing invasive infections in Europe: a molecular epidemiological analysis*. PLoS Med, 7, e1000215.
- Harbarth S, Hawkey PM, Tenover F, Stefani S, Pantosti A, Struelens MJ.(2011):*Update on screening and clinical diagnosis of methicillin-resistant Staphylococcus aureus (MRSA)*. Int J Antimicrob Agents,37, 110–117.
- Juhász-Kaszanyitzky É, Janosi S, Somogyi P, Ádam D, Linda VD, Graaf-Van B, Engeline VD, Jaap AW (2007): *MRSA Transmission between Cows and Humans*, Emerg Inf Dis, 13, 630-632.
- Kaynarca S, Turkyilmaz S (2010):*Methicillin Resistance and Slime Positivity of Staphylococci Isolated from Bovine Mastitis*.J Fac Vet Med, Kafkas Univ, 16, 567-572.
- Kirecci E, Colak A (2002): *Kuru dönem başlangıcında subklinik mastitişli ineklerden izole edilen stafilocok suşlarında metisilin direnci*. J Fac Vet Med, Kafkas University, 8, 98-100.
- Köck R, Mellmann A, Schaumburg F, Friedrich FW, Kipp F, Becke K (2011).*The Epidemiology of Methicillin-Resistant Staphylococcus aureus (MRSA) in Germany*.Dtsch. Arztebl. Int, 108, 761–7.
- Lee JH(2003). *Methicillin (Oxacillin)-resistant Staphylococcus aureus strains isolated from major food animals and their potential transmission to humans*. Appl Environ Microbiol,69, 6489-6494.
- Marlow EM, Bankowski MJ (2011):*Conventional and Molecular Methods for the Detection of Methicillin-Resistant Staphylococcus aureus*.J ClinMicrobiol, 49, 53-56.
- Moon JS, Lee A.R, Kang HM, Lee ES, Paik YH, Park YH, Joo YS, Koo HC (2007):*Phenotypic and genetic antibiogram of methicillin-resistant staphylococci isolated from bovine mastitis in Korea*. J. Dairy Sci. 90, 1176-1185.
- Quinn PJ., Carter M.E., Markey B., Carter G.R; *Clinical Veterinary Microbiology*. Mosby, Harcourt publishers limited, ISBN: 0 7234 1711 3, Section 2: Bacteriology, 8: *Staphylococcus* species, pp: 118-126, 2000.
- Sautter RL, Brown WJ, Mattman LH (1988):*The use of a Selective Staphylococcal Broth versus Direct Plating for the Recovery of Staphylococcus aureus*.Infect Control Hosp Epidemiol,9, 204-205.
- Seguin JC, Walker R, Caron JP, Kloos WE, George CG, Hollis RJ (1999): *Methicillin-resistant Staphylococcus aureus outbreak in a veterinary teaching hospital: potential human-to-animal transmission*. J Clin Microbiol, 37, 1459–63.

- Songer G.J.; Post K.W (2005): Veterinary Microbiology. Bacterial and Fungal Agents of Animal Disease, Chapter4; pp: 35-42, Gram positive aerobic cocci, , The genus Staphylococcus. Elsevier saunders, 11830 Westline Industrial Drive St. Louis, Missouri 63146, ISBN: 0-7216-8717-2.
- Spohr M, Rau J, Friedrich A, Klittich G, Fetsch A, Guerra B, Hammerl JA, Tenhagen BA(2011):*Methicillin-Resistant Staphylococcus aureus (MRSA) in Three Dairy Herds in Southwest Germany*. Zoonoses Pub Health, 58, 252–261
- Suzuki E, Hiramatsu K, Yokota T (1992): *Survey of methicillin resistant clinical strains of coagulase-negative staphylococci for mecA gene distribution*. Antimicrob Agents Chemother, 36, 429–434.
- Tel OY, Bayraktar M, Keskin O (2012):*Investigation of antibiotic resistance among Staphylococcus aureus strains of human and bovine origin*. Vet J Ankara Univ,59, 191-196.
- Tokue Y, Shoji S, Satoh K, Watanabe A, Motomiya M (1992):*Comparison of a polymerase chain reaction assay and a conventional microbiologic method for detection of methicillin-resistant Staphylococcus aureus*. Antimicrob Agents Chemother,36, 6–9.
- Turkylmaz S, Tekbiyik S, Oryasin E, Bozdogan B (2010): *Molecular epidemiology and antimicrobial resistance mechanisms of methicillin-resistant Staphylococcus aureus isolated from bovine milk*. ZoonosesPub Health.57, 197-203.
- Uçan US, Aslan E(2002): *İnek mastitislerinden izole edilen koagulaz pozitif stafilokok suşlarının penisilin direnci ve bazı antibiyotiklere duyarlılıkları*. Vet Bil Derg,18, 19-22.
- Van den Eede A, Martens A, Lipinska U, Struelens M, Deplano A, Denis O,Haesebrouck F, Gasthuys F, Hermans K(2009):*High occurrence of methicillin resistant Staphylococcus aureus ST398 in equine nasal samples*. Vet Microbiol,133, 138-144.
- Van Duijkeren E, Wolfhagen MJHM, Box A, Heck M, Wannet W, Fluit AC(2004): *Human-to-dog transmission of methicillin resistant Staphylococcus aureus*. Emerg Infect Dis,10, 2235–2237.
- Van Loo I, Huijsdens X, Tiemersma E, de Neeling A, Sande-Bruinsma NV, Beaujean D, Voss A, Kluytmans J.(2007):*Emergence of methicillin-resistant Staphylococcus aureus of animal origin in humans*. Emerg Infect Dis,13, 1834-1839.
- Vanderhaeghen W, Cerpentier T, Adrianensen C, Vicca J, Hermans K, Butaye P (2010):*Methicillin-resistant Staphylococcus aureus (MRSA) ST398 associated with clinical and subclinical mastitis in Belgian cows*. Vet Microbiol, 144, 166-171.
- Voss A, Loeffen F, Bakker J, Klaassen C, Wulf M(2005):*Methicillin resistant Staphylococcus aureus in pig farming*. Emerg Infect Dis, 11, 1965–6.
- Walther B, Wieler LH, Friedrich AW, Hanssen AM, Kohn B, Brunnberg L, Lubke-BA (2008):*Methicillin-resistant Staphylococcus aureus (MRSA) isolated from small and exotic animals at a university hospital during routine microbiological examinations*. Vet Microbiol,127, 171-178.
- Wertheim H, Verbrugh HA, Pelt CV, Man P, Belkum AV, Vos MC (2001):*Improved detection of methicillin-resistant Staphylococcus aureus using phenyl mannitol broth containing aztreonam and ceftizoxime*. J Clin Microbiol,39, 2660–2662.
- Zutic M, Cirkovic I, Pavlovic L, Zutic J, Asanin J, Radanovic O, Pavlovic N (2012). *Occurrence of methicillin-resistant Staphylococcus aureus in milk samples from Serbian cows with subclinical mastitis*. African J Microbiol Res Vol. 6(29), pp. 5887-5889, DOI: 10.5897/AJMR12.692.